

iQ Pulse/iQ2 Battery Replacement QSG



Overview:

This document provides the step-by-step procedures for replacing the battery on any of LEC's cellular endpoints. Replacement batteries can be ordered from LEC Sales and will include all the components needed to replace the battery including Scotchlok connectors.

Required:

- T-10 Torx Screwdriver
- Crimping Tool
- Wire cutters
- Android enabled device (i.e. tablet or smart phone)
- iQ Pulse GP-PS01 Configuration app
- Magnet (used to initiate Bluetooth on the endpoint)

Procedures:

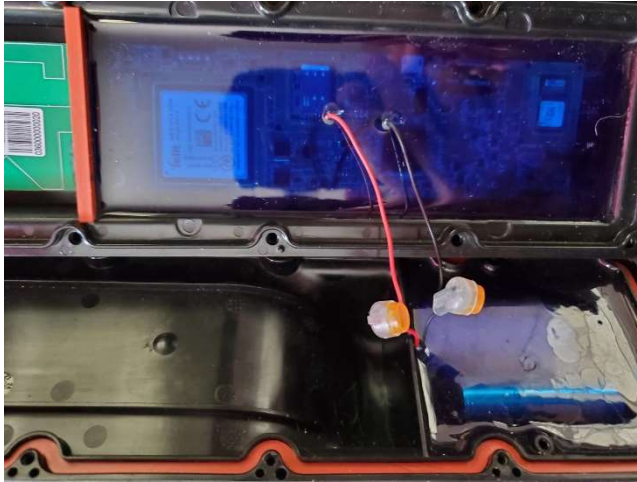
1. Battery Removal

- On the bottom of the cellular endpoint, locate the 10 torx screws securing the battery to the main board.

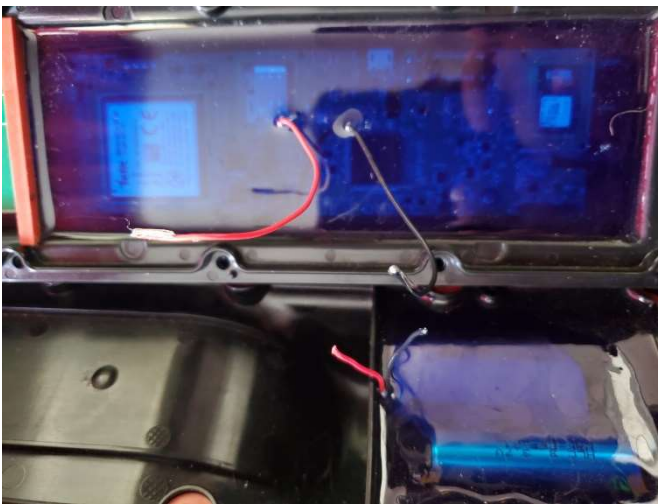


- Remove each screw and set aside

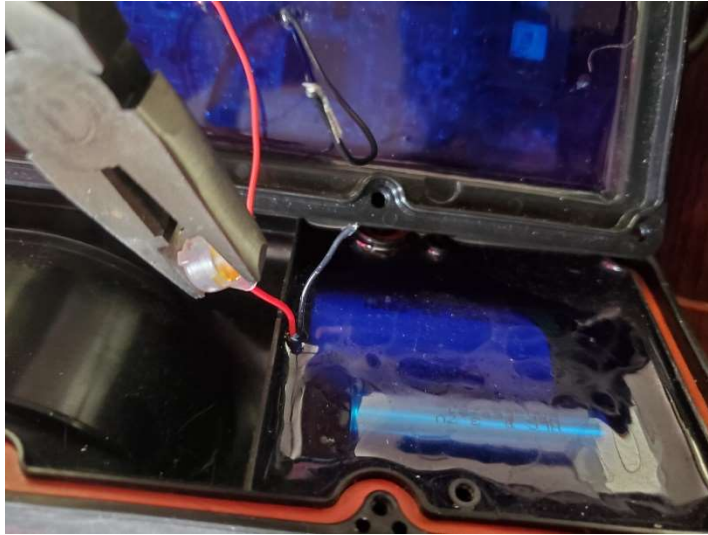
- Carefully separate the battery from the main board.



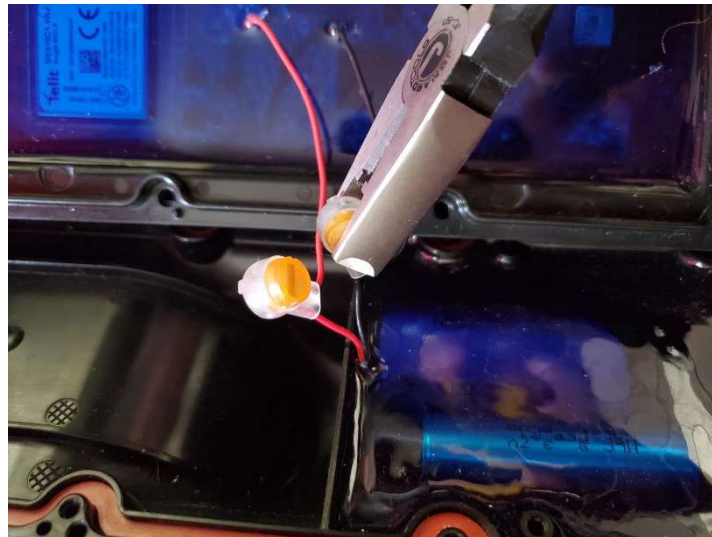
- Using wire snippers, cut both the red and black wires from the Scotchlok connectors. To ensure there will be plenty of wire for connecting the new battery, snip the wire as close to the Scotchlok connector as possible.



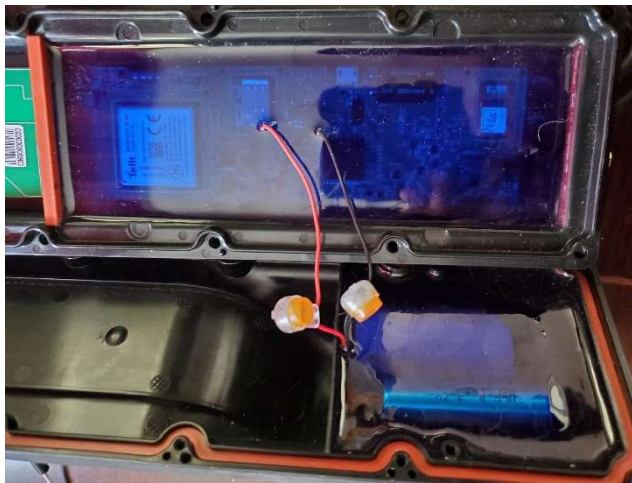
- Locate the new Scotchlok connectors that came with the new battery.
- Insert the red wire from the new battery into one side of the connector and the red wire from the main board into the other side of the connector.




- Ensure both red wires are inserted fully into the connector then gently crimp the connector until the wires are secure.
- Repeat these steps for the black wire.



- Once both sets of wires are securely connected to each Scotchlok connector, using a magnet, activate the Bluetooth mechanism on the endpoint.
- Verify the green LED on the top of the unit is illuminated. This will verify the wires have a good connection. If the LED does not come on, check the wires again. You should be able to see each wire touching the top of the inside of the connector.
- If after verifying the wires, the LED still has not come on, repeat the above steps to attempt a better connection.



- To check the battery level, login to the endpoint using the LEC GP-CEP Technician's app.
- On the Additional Info page, locate battery level to view the current level.


IOT TECHNOLOGIES
 INTERNATIONAL

ADDITIONAL INFO

IMEI: 350195680017898
 ICCID: 89011703278704355331
 IMSI: 310170870435533
 rsrq: -12.0 dB
 rsrp: -91.0 dBm
 sinr: 116 dB
 NETWORK STATUS: REGISTERED, HOME NETWORK
 ACCESS TECHNOLOGY: CAT-M1
 CELL INFORMATION: MCC 310, MNC 410,
 MODEM CNUM:
BATTERY: 3.69 V
 DEVICE MANUFACTURING DATE: 01/01/2000 00:00:00
 DEVICE SW VERSION: 1.0.3
 DEVICE HW VERSION: 0.00
 DEVICE TIME: 02/04/2022 13:09:07
 SENSOR Voltage: -25 psi
 MODEM MODEL: ME910C1-WW
 MODEM VERSION: 30.00.809

REFRESH

- Once connection has been verified, gently press the battery and main board back together and secure with the 10 Torx screws removed in the previous step.